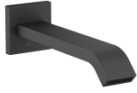

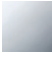

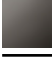



13 801 670



- Saliente 200 mm
- Chorro normal rectangular
- Diámetro del orificio 37 mm
- Racor 1/2"
- Caudal máx. 25,1 l/min con 3 bares de presión hidráulica

	Negro mate	13 801 670-33
	Cromo	13 801 670-00
	Platino cepillado	13 801 670-06
	Dark Chrome	13 801 670-19
	Cromo cepillado	13 801 670-93

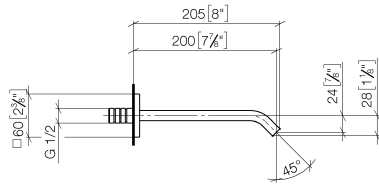
### Complementos recomendados



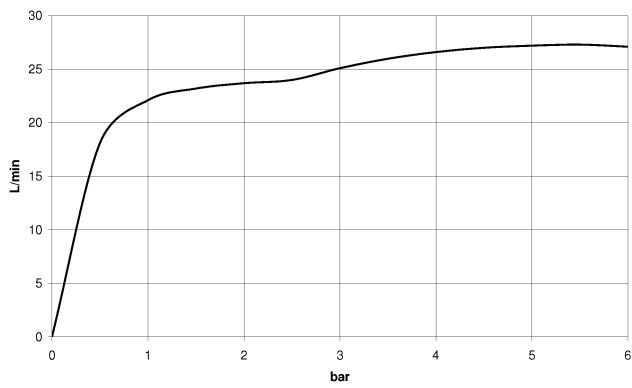
- Cuerpo empotrado -** 35 085 970 90
- Profundidad de montaje mín. 90 mm
  - Profundidad de montaje máx. 163 mm

13 801 670

mm [inches]



### Diagrama de flujo



### Certificado

IAPMO\_4976 (6).

